



# Local Safeguarding Children Board

## Annual Report 2013-2014



"The West Berkshire Local Safeguarding Children Board was established in 2004, as a major element in the Every Child Matters Change for Children agenda and in support of the five key outcomes with a particular focus on staying safe."

## Essential information

West Berkshire LSCB  
West Street House  
Newbury  
Berkshire RG14 1BZ

Author: Ros Haynes, LSCB Business Manager  
Date published: July 2014

© West Berkshire Council

If you have any queries about the report please contact Ros Haynes,  
LSCB Business Manager.

Telephone: [01635 503159](tel:01635503159)  
E-mail: [rhaynes@westberks.gov.uk](mailto:rhaynes@westberks.gov.uk)  
Website: [www.westberksLSCB.org.uk](http://www.westberksLSCB.org.uk)

If you require this information in an alternative format or translation,  
please call Ros Haynes.

## Contents

|                                                                |    |
|----------------------------------------------------------------|----|
| Foreword by Independent Chair                                  | 3  |
| Executive summary and key messages                             | 4  |
| Local area profile                                             | 7  |
| Major factors influencing the work of the LSCB                 | 8  |
| Governance and accountability arrangements                     | 11 |
| Engagement with children and young people                      | 14 |
| LSCB Business Plan                                             | 14 |
| Effectiveness of safeguarding arrangements over the past year: |    |
| LSCB                                                           | 15 |
| West Berkshire Council                                         | 17 |
| CAFCASS                                                        | 18 |
| Berkshire West Clinical Commissioning Groups (CCG)             | 18 |
| Health Services                                                | 19 |
| Schools                                                        | 20 |
| Thames Valley Police                                           | 21 |
| Thames Valley Probation Service                                | 21 |
| Youth Offending Team                                           | 22 |
| Voluntary Sector                                               | 23 |
| Sub Groups and Task Groups                                     | 24 |
| Conclusions                                                    | 30 |
| Appendices:                                                    |    |
| A    Child Protection data                                     | 31 |
| B    Training information                                      | 35 |
| C    LSCB membership                                           | 36 |
| D    Financial information                                     | 37 |
| E    List of acronyms                                          | 38 |

## Foreword by Independent Chair

Everyone has a responsibility for safeguarding children and young people. It is vital that all agencies work together to ensure children and young people are safe and achieve good outcomes.

The LSCB has a statutory duty to co-ordinate how agencies work together to safeguard and promote the well-being of children and young people in West Berkshire and to ensure the effectiveness of local safeguarding arrangements.

This year has seen a focus on implementing the revised government guidance Working Together to Safeguard Children 2013. This has led to the development of threshold criteria for Children's Services, along with a single assessment form. The Threshold document aims to help practitioners identify a child's level of need and to be familiar with the best way to access the support needed.

Over the past year there has been increased national awareness in relation to sexual abuse, including historical abuse and links to child sexual exploitation. West Berkshire LSCB has put in place strategic and operational developments, with strong multi-agency support led by West Berkshire Council and Thames Valley Police.

Changes in the health service structure came into effect in 2013, with the establishment of Clinical Commissioning Groups and NHS England Local Area Teams. The LSCB worked with the new groups to ensure good links were made and safeguarding remained a priority.

A major restructure is currently underway in Thames Valley Probation Trust. The LSCB will work with the Trust to ensure partnership working remains effective and children are safeguarded.

Working Together 2013 requires the Chair of the LSCB to publish an Annual Report on the effectiveness of safeguarding arrangements and setting out how well agencies promote the welfare of children in the local area.

This Report aims to provide an overview of the performance and effectiveness of local services. It identifies areas of weakness, the causes of any weaknesses and the action being taken to address them as well as other proposals for action. Each agency has been asked to provide its own assessment of performance; these are summarised in the Report, along with contributions from sub-groups which undertake a significant amount of the work of the Board.

The report is presented to the Chief Executive of West Berkshire Council, the Lead Member, Chair of the Health and Well-Being Board and the Police and Crime Commissioner. It is also formally reported to the Boards of the local Health Trusts. It is intended for a wide audience including the professional workforce and local communities.

A handwritten signature in black ink that reads "Stephen Barber". The signature is written in a cursive style with a large initial 'S' and a period at the end.

**Stephen Barber**, Independent Chair

## Executive summary and key messages

The Annual Report provides an insight into the work carried out locally to safeguard children, outlining progress made during 2013/14 and summarising the key priorities and challenges ahead.

The LSCB is working to increase its effectiveness by focusing on outcomes for children and young people. At a business planning session in October 2013, members decided to review the vision and values of the LSCB; following consultation, a set of LSCB Values were agreed by members in April 2014.

### West Berkshire LSCB Values

West Berkshire LSCB:

- works together as an inter-agency partnership to safeguard and promote the welfare of children and young people
- puts children's wellbeing at the centre of its thinking and actions
- listens to children and takes their views into account
- is committed to helping children be safe in their families and settings
- keeps up to date with national developments and promotes good practice locally
- listens to front-line practitioners and takes their views into account
- addresses diversity issues in all aspects of its work
- offers a constructive challenge and support to partner agencies

The LSCB has identified the following key messages to support effective safeguarding within the West Berkshire area.

### Messages for Chief Executives and Directors

- Senior officers must ensure that their workforce is able to participate in LSCB safeguarding training, to attend training courses and learning events.
- Every agency's contribution to the work of the LSCB must be categorised as the highest priority in the allocation of time and resources.
- The LSCB needs to understand the impact of any organisational restructures on the capacity to safeguard children and young people in West Berkshire.
- Performance information needs to be produced and contextualised to demonstrate the effectiveness of safeguarding within services.
- Ethnicity and disability information needs to be used in a strategic context to commission relevant services.

## Messages for the children's workforce

- All members of the children's workforce, from all agencies and the voluntary sector, should use safeguarding courses and learning events to keep them up to date with lessons learnt from research and to improve their practice.
- All members of the children's workforce, both paid and voluntary, should be familiar with the role of the LSCB and Berkshire Child Protection Procedures.

[Link: Berkshire LSCB Child Protection Procedures](#)

“Committed to helping children be safe in their families and settings”.



## Messages for Thames Valley Police

- Ensure adequate attendance at initial Child Protection Case Conferences.
- Ensure referrals into children's social care take account of the thresholds for statutory intervention.
- Ensure work with the Local Authority on domestic abuse remains a priority.
- Continue to improve identification of risk in domestic abuse cases.
- Ensure that police officers receive safeguarding training appropriate to their level and evidence this.
- Ensure police officers are able to participate in multi-agency training events.
- Continue to improve responses to child sexual exploitation and the identification of risk when children and young people are reported missing.

## Messages for Thames Valley Probation

- Ensure any safeguarding risks, arising out of the current restructure, are identified and mitigated against.
- Demonstrate that the Multi-Agency Public Protection Arrangements (MAPPA) and the Multi-agency Risk Assessment Conferences (MARAC) protect children from harm and promote children's wellbeing.
- Continue to support the work with children of prisoners or in contact with offenders.

## Messages for Berkshire Healthcare NHS Foundation Trust

- Continue the work to ensure looked after children receive appropriate, high quality health services.
- Promote the Think Family approach within adult mental health services.
- Participate in developing early help services, ensuring health visitors and school nurses understand thresholds for statutory intervention and where to get help for families whose needs do not merit a statutory intervention.

## Messages to Clinical Commissioning Groups

- Complete Section 11 self audits.
- Ensure all commissioned services are monitored to ensure they meet safeguarding standards and to share health safeguarding data with LSCBs.
- Promote the need for GP involvement in all aspects of Child Protection Conferences

## Messages for NHS England Local Area Team

- Play a full part in LSCB work.
- Complete Section 11 return.
- Ensure that the Sexual Assault Referral Centre (SARC) achieves a quality service and provides regular performance information to partner agencies.

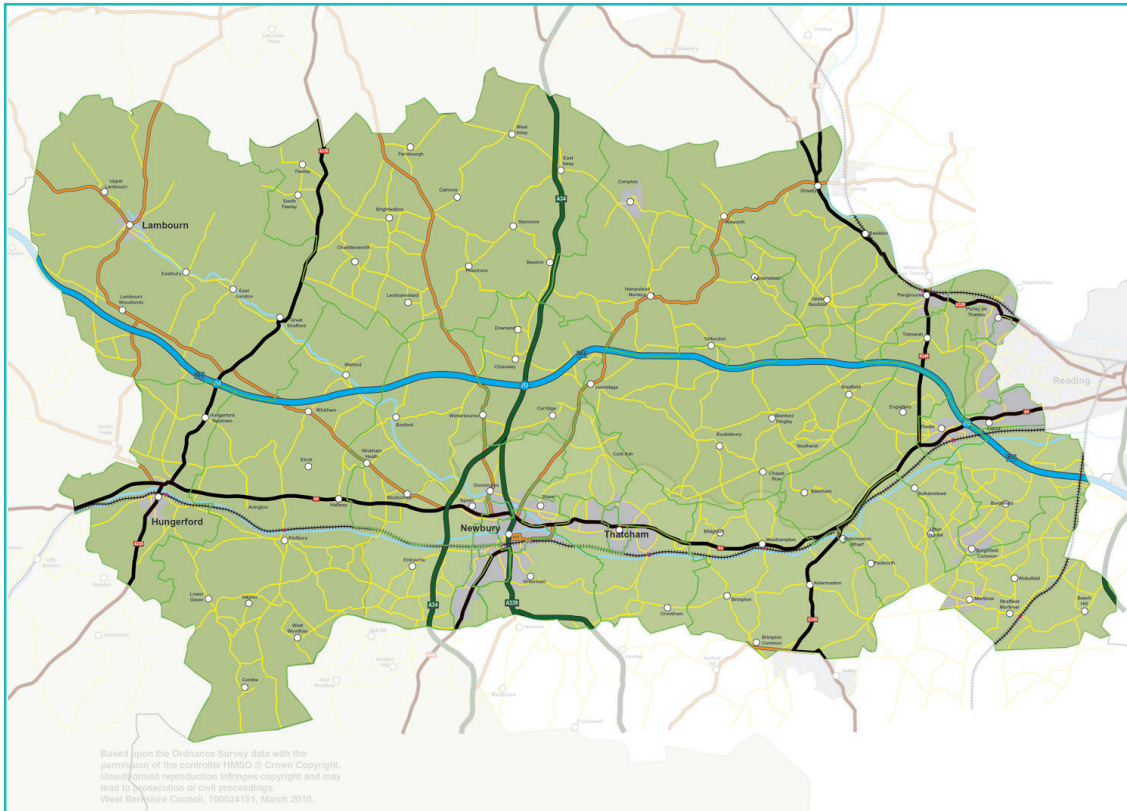
## Messages to Schools in West Berkshire

- Continue to complete the annual Section 11 audits.
- Work with other agencies to support the Domestic Abuse Champions project.
- Support the LSCB in raising awareness of child sexual exploitation.
- Ensure all staff are recruited safely.
- Ensure all staff are appropriately trained in safeguarding.



## Local area profile

West Berkshire makes up over half of the geographical area of the county of Berkshire - covering an area of 272 square miles. It lies on the western fringe of the South East region. West Berkshire covers a geographical area stretching from Hungerford in the West to Calcot in the East.



Although West Berkshire is a relatively affluent area, there are pockets of deprivation within the district. One area (the Nightingales estate in south Newbury) falls within the bottom quintile nationally when measured against the overall Indices of Multiple Deprivation (IMD) measure, with 2 other areas (in Calcot in the east and central Thatcham) falling within the bottom third. The one domain where the indices show a greater number of areas falling within the bottom quartile nationally is in relation to education, skills and training.

The 2011 census showed West Berkshire with a population of just under 154,000. The number of young people 0-19 years in West Berkshire was 38,629.

Between 2001 and 2011 the number of young people in the 0-19 age group rose by 4% (slightly smaller than the regional and national change) but there was an increase of 14% in the 0-4 age group, reflecting a national change and suggesting a mini 'baby-boom'.

Population projections over the next decade estimate the number of 0-9 year olds living in West Berkshire to have grown by 3,300 by 2021 (17%). This compares to a similar expected growth across the South East of around 15%. The numbers of 10-19 year olds is anticipated to have increased by around 1,500 (8%), which is also in line with the projected growth rate for the district as a whole.



The rate of child poverty is relatively low in West Berkshire, at 11.6% (3800) for children aged under 16 years, compared with the South-East average of 15.5%. However the level of poverty increased by 0.8% in West Berkshire during the period between 2008 and 2011.

The 2011 Census shows that, when compared nationally, there is a significantly lower proportion of people in West Berkshire who define themselves as coming from a black or minority ethnic (BME) background - 5% of West Berkshire residents as a whole, compared to 14% of people in England and Wales generally.

The largest increase in ethnic group over the last decade is 'Asian or Asian British', an increase of 1.7%, compared to an increase twice that in England and Wales.

1.4% of the population in West Berkshire were born in one of the EU accession countries (Malta, Cyprus, Estonia, Latvia, Lithuania, Poland, Czech Republic, Slovakia, Slovenia, Hungary, Bulgaria and Romania), equating to just over 2,000 people. This compares to 2% of the population nationally. Aside from the UK, the most common countries of birth are India, Poland, South Africa, Ireland and Germany.

Just over 3000 people in West Berkshire speak a European language as their primary language. Of these, Polish is the highest number, at just over 1000, and just over 800 speak a South Asian language as their primary language, just over 600 an East Asian language and just over 200 an African language.

*Source; the West Berkshire District Profile 2013 and the West Berkshire Child Poverty Needs Assessment Refresh 2014. These documents can all be found via the West Berkshire Council website [www.westberks.gov.uk](http://www.westberks.gov.uk)*

## Major Factors Influencing the Work of the LSCB

### Changes in partner agency structures

Changes in the health service structure came into effect in 2013, with the establishment of Clinical Commissioning Groups and NHS England Local Area Teams. The LSCB continues to work with the new groups to ensure good links are in place and that safeguarding remains a priority.

A major restructure is currently underway in Thames Valley Probation Trust. From 1st June 2014, Thames Valley Probation Service will be replaced by the National Probation Service and Thames Valley Community Rehabilitation Company. The LSCB will work with the National Probation Service and the Community Rehabilitation Company to ensure partnership working remains effective and children are safeguarded.

### Funding

All public sector organisations face resource restrictions with new challenges locally in relation to a rising child population. The LSCB provides regular opportunities for agencies to highlight pressures on safeguarding at meetings.

## Child Sexual Exploitation (CSE)

2013 saw an increase in national awareness in relation to sexual abuse, including historical abuse and links to child sexual exploitation. The LSCB has established both Strategic and Operational CSE groups to take this work forward locally, with strong multi-agency support led by West Berkshire Council and Thames Valley Police.

## Missing Children

New statutory guidance in relation to missing children (January 2014) provides detail on how Local Authorities and their partners should take action to prevent children from going missing and to protect them when they do. A new expectation that a return interview will be completed by an independent person after every missing episode is being responded to locally but will have major resource implications in future. Safe and well checks continue to be completed by Thames Valley Police, and the LSCB carried out a sample to check these were being carried out appropriately.

## Female Genital Mutilation (FGM)

The publication of a report by The Royal College of Midwives entitled Tackling FGM in the UK – Intercollegiate recommendations for identifying, recording and reporting (November 2013) identified key principles and recommendations to safeguard girls at risk of FGM. In response to the recommendations, a local multi-agency task group has been formed and an action plan developed.

## The Munro Review of Child Protection

The Munro Review of Child Protection 2011 made recommendations for creating a work environment that will better support professionals in giving children, young people and families the help they need. In West Berkshire, the Munro Implementation Board has been working to implement the recommendations since 2012. One specific recommendation was made in relation to the collection and use of data; this has been responded to locally by developing 'The Data Zone', a new management information bulletin which provides the data needed at a strategic level, focusing on information which is key for understanding and evaluating activity within the service. Work is also underway on recruitment and retention of social workers to attract and keep staff in this area.



## A Youth Offending Team Case Study

Stevie committed his first offence when he was 16 years old. It was a violent offence for which his co-defendant was imprisoned. He was sentenced to a community order under the supervision of the Youth Offending Team (YOT) and an assessment was carried out including information from his school, social worker, a parenting assessment and a self-assessment.

Stevie had very quickly shown genuine remorse for his offence but wasn't able to repair the harm to his victim directly, so as reparation worked each week at a soccer academy with younger children, some with learning difficulties. In an article he wrote for the YOT Newsletter he said "this was very rewarding because it made me feel that I had been taking things for granted in my life and that other young people are not so fortunate and do not have the same opportunities.... This was a perfect way to repair the hurt and damage I caused and for others in the local community to benefit".

Stevie worked with his YOT Officer on issues within his family and on strategies to ensure he did not offend again. He is now studying for A Levels, continuing to volunteer at the soccer academy and voluntarily supporting younger children with rugby coaching. His reparation has helped put his offence behind him and to move forward positively with his studies and future life. His increased confidence led him to volunteer to talk to the LSCB about his views on safeguarding children in West Berkshire, gaining the respect of all those who attended the meeting.

**"This was a perfect way to repair the hurt and damage I caused and for others in the local community to benefit".**

## Governance and accountability arrangements

### Statutory objectives and regulations

**Section 13 of the Children Act 2004** requires each local authority to establish a LSCB for their area and specifies the organisations and individuals that should be represented on LSCBs.

The core objectives of the LSCB are set out in section 14(1) of the Children Act 2004 as follows:

- a) to co-ordinate what is done by each person or body represented on the Board for the purposes of safeguarding and promoting the welfare of children in West Berkshire, and
- b) to ensure the effectiveness of what is done by each such person or body for that purpose.

The role and function of the LSCB is defined by Working Together to Safeguard Children 2013 and related safeguarding national, regional and local guidance.

Members are reminded of their roles and responsibilities at meetings and during their induction. A member development session was held in October 2013 to support members on leadership and challenge. This was well received with the majority of members attending.

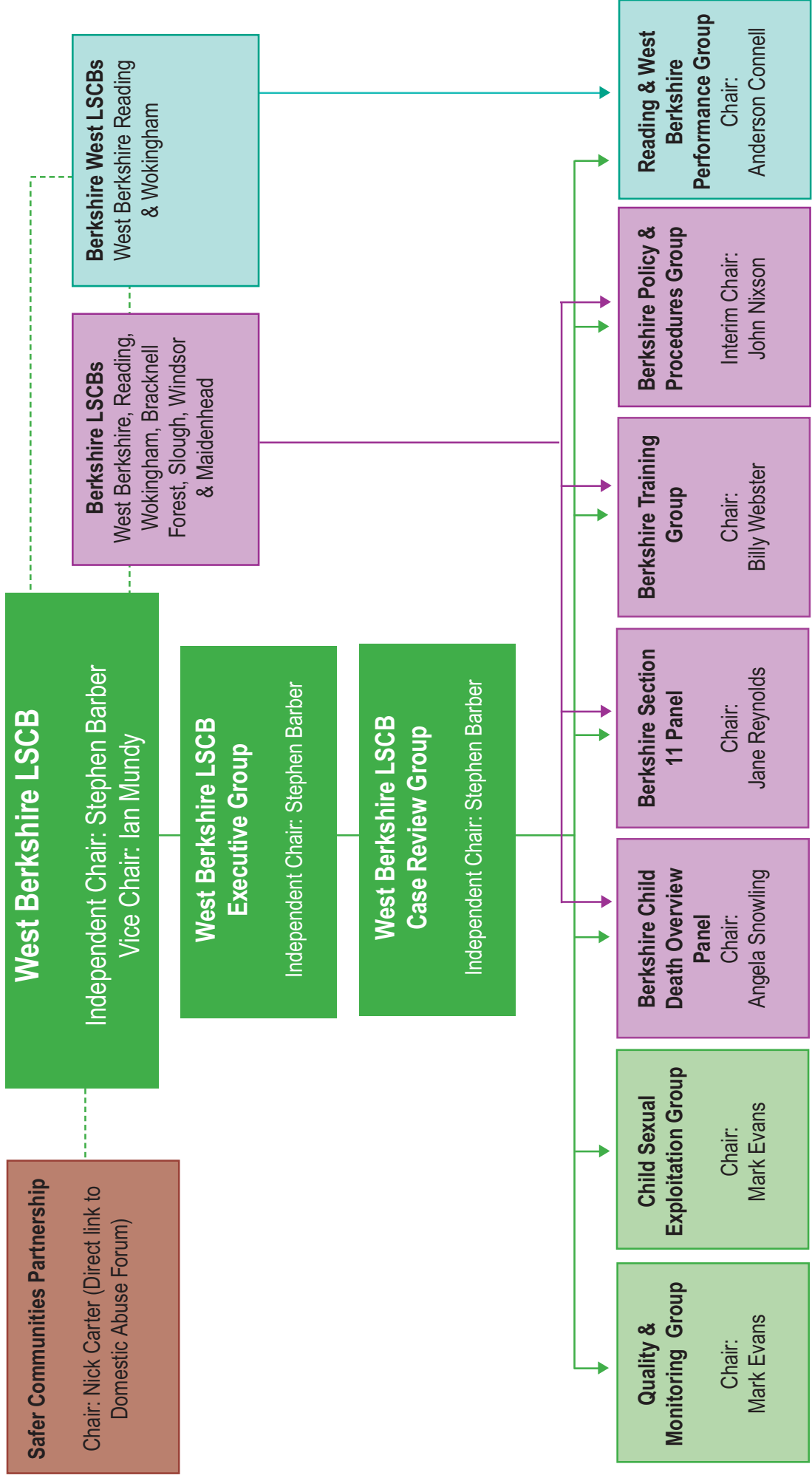
### LSCB Chair, accountability and resourcing

Working Together 2013 states that, in order to provide effective scrutiny, the LSCB should be independent. The West Berkshire Chair, Stephen Barber, is independent of partner agencies to allow the LSCB to exercise its local challenge function effectively. The Chair has a crucial role in making certain that the LSCB operates effectively and secures an independent voice for the LSCB. Stephen also chairs the Reading and Wokingham LSCBs to support joint working and consistency across agencies. To ensure effective communication between the LSCB and other partnerships the Chair also attends the Health & Wellbeing Board annually and works closely with the Chair of the West of Berkshire Safeguarding Adults Partnership Board.

In order to meet its objectives, the LSCB has several sub-groups, each of which is accountable to the LSCB and produces a workplan which is monitored.

An overview of the work of the sub-groups can be found on pages 24-29.

# West Berkshire Local Safeguarding Children Board Structure



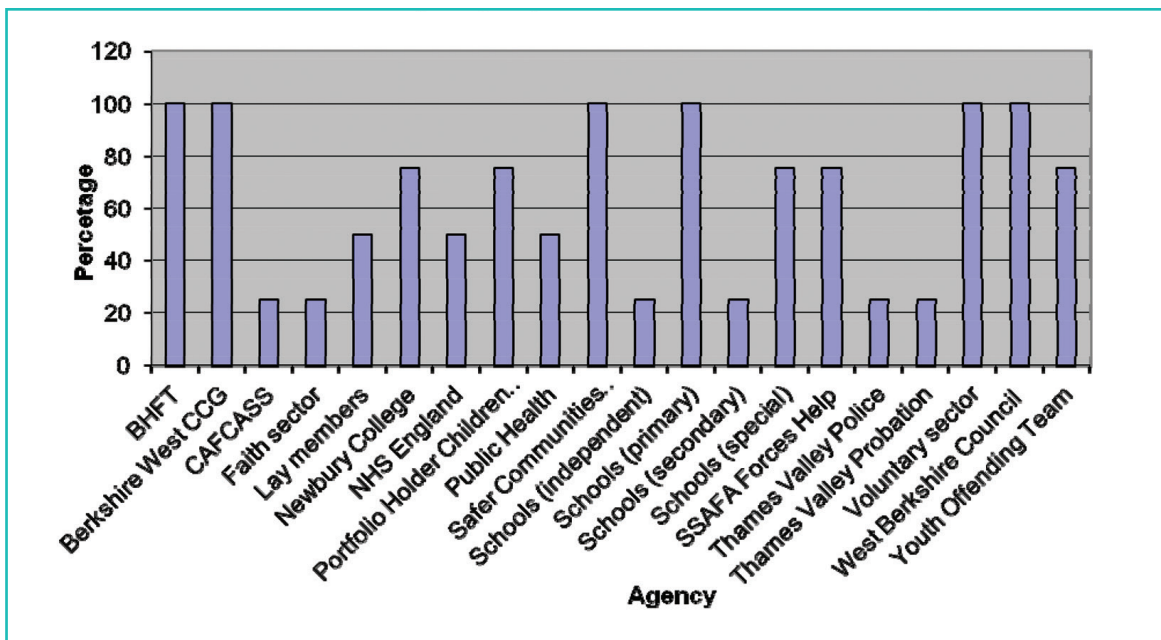
## Membership/Attendance

LSCB members have a responsibility to attend all meetings and disseminate relevant information within their agency. Attendance at meetings is monitored to ensure attendance is regular and at an appropriate level. These records are presented to members on an annual basis as part of the LSCB's quality assurance process.

Attendance in West Berkshire is generally good and, if a member is unable to attend, they are asked to send a deputy to ensure all messages are disseminated to each agency. Any lack of agency attendance is addressed directly by the Business Manager or escalated to the Chair.

Attendance figures by agency, based on four meetings held from April 2013–March 2014, are shown below.

### Agency representation at LSCB meetings 2013-2014



In addition, the Designated Doctor attends meetings once a year by arrangement.

## Engagement with children and young people

The LSCB recognises the importance of listening to children and young people, and taking their views into account, this being one of the agreed LSCB values.

Opportunities to hear the views of young people directly at LSCB meetings are being actively sought. At a recent meeting, a young person spoke about his experience of working with the YOT and the benefits of reparation. He also gave his views on the risks to safeguarding, which included drugs and the shortage of out of school activities, especially in rural areas. A future meeting will include attendance by young people involved in peer mentoring.

The views of particularly vulnerable children and young people are sought when they are in the Council's care, with extracts being included in an annual report to the Board.

A recent audit of service user feedback within West Berkshire Council identified areas of good practice and ways in which recognition of feedback could be strengthened.

*Feedback from children in the Independent Reviewing Officers Report April 2013 - March 2014 indicated that 98.3% felt safe being looked after.*

*Feedback from foster carers said they valued the Independent Reviewing Officers for: "their knowledge of the child's rights, entitlements, etc" and that "he is very knowledgeable and helpful and we feel he is very approachable".*

## LSCB Business Plan

The current three year Business Plan 2014-2017 was agreed by members in April 2014. The Plan has multi-agency actions and represents work from most LSCB partners. The priorities addressed in the plan are:

- Early intervention/early help
- The child's journey
- Sexual abuse/sexual exploitation
- Domestic abuse
- Governance and communication

The full Business Plan can be viewed on the LSCB website [www.westberkslscb.org.uk](http://www.westberkslscb.org.uk)



## Effectiveness of safeguarding arrangements over the past year

### LSCB

---

#### LSCB Achievements

- Hosting arrangements have been put in place for all sub-groups to improve communication links with LSCBs;
- Child Sexual Exploitation (CSE) strategic and operational multi-agency sub-groups established to address CSE locally;
- Reduction in number of young people subject to CSE following successful multi-agency intervention;
- CSE sub-group identified young people at risk and perpetrators in Operation Forte disruption order;
- Workshop on Serious Case Review models held March 2014 to consider the range of models available;
- A survey of members was carried out in September 2013 to identify priorities for the 2014-2017 LSCB Business Plan;
- LSCB member development session held in October 2013 on leadership and challenge, with a further session for Executive members in June 2014;
- Berkshire West LSCBs and Safeguarding Adults Partnership Board held their annual joint safeguarding conference in September 2013; the theme for the conference was Sexual Abuse;
- Raising awareness of CSE amongst young people, parents and the wider community through a LSCB and Thames Valley Police jointly funded project delivering performances of 'Chelsea's Choice' in West Berkshire secondary schools. During September 2013, the play was delivered by Alter Ego Creative Solutions Ltd, reaching 1969 young people and staff;
- West Berkshire safeguarding information updates distributed to a wide mailing list on a weekly basis;
- Developed effective links with CCGs in their first year of operation; including representatives for the LSCB and LSCB Executive;
- New CSE e-learning course launched for all LSCB partner organisations;
- Carried out a review of the support and activities provided to voluntary and community organisations operating in West Berkshire;
- Published threshold criteria and assessment protocol for Children's Services;
- Successfully recruited a new lay member;
- Berkshire wide lay members meetings held to increase awareness of the role and to network with others across Berkshire;
- Commissioned a presentation on the Serious Case Review of Daniel Pelka which was delivered to the LSCB and made available as a PowerPoint presentation for dissemination to all LSCB partners;
- Agreed a protocol between the Thames Valley LSCBs and the Sexual Assault Referral Centre to improve communication and reporting;
- Task-group set up to take forward the intercollegiate recommendations Tackling FGM in the UK;



- Guidelines put in place to improve the engagement of LSCB members through effective challenge at meetings;
- Berkshire Child Protection Procedures have been updated in relation to recent guidance on CSE, missing children and safe staffing;
- In response to an LSCB survey on domestic abuse, a lunchtime seminar has been held on 'Identifying and responding to domestic abuse – particularly in situations of emotional abuse'.

### LSCB Challenges

- Developing an agreed dataset with agencies providing context and commentary to the data;
- Monitor police and GP attendance and reporting to Child Protection Conferences to ensure contribution is effective;
- Regular data is provided by Thames Valley Police but representation on the Training Sub-Group is still needed;
- Improve links with NHS England Local Area Teams and ensure they are fulfilling their Section 11 duties; including providing regular reports on the Sexual Assault Referral Centre (SARC);
- Obtaining performance data from the SARC through NHS England.



## Partner agencies safeguarding effectiveness

### West Berkshire Council

---

#### West Berkshire Council Achievements

- Help for Families team set up, providing a single route for enquiries and support for children and families with additional needs that do not meet thresholds for social care or other high need services;
- Turnaround Families programme is working effectively with families to help children back to school, reduce antisocial behaviour and offending and help adults back to work;
- School staff and volunteers all receive universal safeguarding training. In addition to this specific training for Designated Persons in school is provided every 2 years. A wider group of managers is now attending this training; early years settings, independent schools and other staff from WBC have found this training extremely informative;
- A system for information sharing of domestic abuse cases with schools has been developed;
- The Gypsy, Roma and Traveller (GRT) Practitioners Group is a multi-agency group which shares best practice for better outcomes for Gypsy, Roma and Traveller families. It aims to enhance communication, providing effective links within the group and the GRT community;
- Work carried out with Unaccompanied Asylum Seeking Children;
- Work carried out supporting parents (under Child in Need or Child Protection) to engage and fulfil safeguarding requirements;
- Bilingual Pupil Support Officers liaise in first language to support schools and parents where there are concerns and/or children are in vulnerable circumstances.

#### West Berkshire Council Challenges

- Increase in workload due to a rise in the number of children and young people subject to Child Protection Plans and increase in numbers of Looked After Children. Between 2011/12 to 2013/14 the number of Looked After Children has increased by 22% (125 to 161) and children subject to a Child Protection Plan rose by 48% (78 to 116). Two additional social worker posts have already been created to address this increase and there are plans for further new posts to be recruited to in September 2014. The increased capacity will enable the additional demand to be met;
- Children's Services continue to experience significant recruitment and retention difficulties across a range of teams. The R&A, Locality and DCT teams are the most seriously affected. Work will continue to develop and roll out a new Recruitment and Retention strategy to improve the ability to retain existing staff and attract new staff. This will be finalised in July 2014;
- Despite extensive attention, delays are still being identified in progressing Plans for some children and young people. Work is continuously underway to improve quality assurance processes to improve identification and resolution of these issues. Work is also being carried out with teams to provide training and development to help minimise delays.

## Children and Family Court Advisory and Support Service (CAFCASS)

---

### CAFCASS Achievements

- Ofsted Inspection of Services for children and young people in the area in March 2014 showed that safeguarding outcomes were “Good” in both Private and Public Law work;
- Local Management performance was assessed as “Good” by Ofsted and Senior Management was assessed as “Outstanding”;
- The proportion of open public law care cases allocated to an appointed Children’s Guardian is currently 100% (against a target of 97%);
- The current timescale for allocation to an appointed Children’s Guardian for a public law care application is less than a working day (against a target of 0-3 days on average);
- The current public law care application duration is 24 weeks in West Berkshire on average; this is 2 weeks below the national average and is the lowest for at least 12 months;
- Proportion of open private law workload allocated to a Family Court Adviser is currently 100% for Berkshire (against a target of 97%);
- Percentage of Section 7 reports that meet the agreed filing times is currently 98% for Berkshire (against a target of 97%);
- Private law, there are currently 170 open cases in Berkshire. This is the lowest number for at least 12 months;
- Section 16.4 cases (begin as private law but require a Guardian role) continue to reduce through active case management. There are currently 21 of these cases in Berkshire. This is the lowest figure for at least a year;
- Time taken for private law reports to be filed in Berkshire is currently 12.4 weeks on average. This compares to a national average of 12.0 weeks.

### CAFCASS Challenges

- Impact of Public Law Outline and the Child Arrangement Programme in Private Law have led to significant structural and operational changes across the area as well as nationally.

## Berkshire West Clinical Commissioning Groups (CCG)

---

### CCG Achievements

- In January 2014 the CCGs successfully recruited to the post of Named Nurse Primary Care. This new role has been developed to support GPs in their safeguarding work and to encourage the contribution of GPs to the child protection conference process;
- The CCG continues its duty to ensure that there is senior representation from the CCG at all LSCB meetings and its sub-groups.

### CCG Challenges

- Completion of Section 11 audit as commissioners of health services.

### BHFT Achievements

- Training compliance above target;
- Establishment of on call urgent advice line for BHFT staff;
- Provider of inter-agency training sessions and forums;
- Development and continuation of good communication lines between team and BHFT managers including adult and mental health services, adult safeguarding team, LAC team. This includes active representation at the Service Improvement Group and children's safeguarding meetings;
- Development of regular inter-agency meetings and on-going links with external agencies;
- Widely respected representative and active member of LSCB sub-committees across BHFT;
- Increased communication across BHFT; intranet site established and two newsletters published;
- On-going monitoring of Section 11 Audit;
- Visible and active promoters of dissemination of actions from four serious case reviews and integration into practice;
- Child Protection clinical supervision policy published and practice standardised;
- Domestic abuse policy reviewed;
- Completion of safeguarding training outcome audit;
- New case conference report template designed and widely disseminated for staff use;
- Contribution to LSCB reviews;
- All members of staff have received specialist safeguarding training in addition to mandatory/statutory requirements;
- Production of quarterly safeguarding data and assistance with development of safeguarding dashboard to commence 2013/14;
- Partnership working with Local Authorities and LSCB has increased across the team;
- Promotion of child sexual exploitation across the Trust with a named professional appointed to collect data on concerns raised within the Trust;
- Promotion of LADO and a central point of contact within the safeguarding children team to record all LADO enquires;
- Supported services and clinicians in external and internal investigations;
- Staff survey on awareness of child sexual exploitation;
- Implementation across BHFT health for data reporting for the LSCB by introduction of the score card.

## BHFT Challenges

- Embed and continue good practice;
- Two safeguarding audits to be completed in 2013/14;
- Increase provision of targeted training;
- Ensure targeted training is 85% compliant at March 2015;
- Ensure single agency training is 95% compliant in 2015;
- Ensure supervision compliance is 85% at March 2014;
- Implement a new evaluation outcome tool for internal training;
- Share learning across the Trust in multi-media formats and through the Service Improvement Group;
- Continue to be a strong representative on the LSCB.

## Schools

---

### School Achievements

- Schools have again completed their annual safeguarding S11 audit with good results;
- Online child sexual exploitation training has been introduced this year, which school staff are encouraged to complete. This will be added to the next audit to monitor the numbers of those completing the training;
- Schools continue to focus on raising attendance and achievement for pupils. A wide range of support, advice and interventions take place in order to help and support children to attend school regularly;
- Anti-bullying information is disseminated to schools via the West Berkshire Anti-bullying e-newsletter;
- Fourteen schools have now achieved 'Safe in Our Hands', West Berkshire's anti-bullying self-evaluation and accreditation, which was written to support schools in their anti-bullying work;
- A number of primary schools are working towards 'Safe in Our Hands';
- Students from West Berkshire secondary schools attended the Council Chambers in February 2014 for the annual Peer Mentoring Conference;
- Peer Mentoring Leads in 10 of our secondary schools gained certification in peer mentor training from the "Mentoring and Befriending Foundation" following a recent day's training at Trinity School.

### School Challenges

- Safer recruitment training is being promoted to school Governors again through Governor Services to increase the numbers of governors who attend this training;
- Adhering to the Keeping Children Safe guidance for schools.

## Thames Valley Police

---

### Police Achievements

- Multi-agency working on CSE locally. As a result of the excellent partnership arrangements, West Berkshire is now in a strong place to safeguard children and to work to reduce the risk of CSE, targeting perpetrators and supporting the victims;
- Partnership arrangements have been agreed to allow agencies to better identify and help people who are repeatedly victims of domestic abuse, even though the victims often avoid engaging with the police and other agencies. These arrangements will help prevent children from being witnesses or suffering from domestic abuse.

### Police Challenges

- Increase in workload due to a rise in the number of child protection cases and the need for the police to be involved in all initial Child Protection Conferences.

## Thames Valley Probation Service

---

### Probation Achievements

- All new staff attend Child Safeguarding training and all current staff attend refresher training on a regular basis;
- A successful Joint Inspection of safeguarding procedures took place in August 2013 with an action plan put in place and completed for any areas requiring improvement.

### Probation Challenges

- The Government's Transforming Rehabilitation programme is now taking effect with the formation of two new organisations, the National Probation Service and Thames Valley Community Rehabilitation Company, from 1 June 2014. The two organisations will ensure that safeguarding matters continue to be a priority and both will be represented at LSCBs to maintain the sharing of best practice;
- To ensure that both organisations work effectively with the wider local partnership so that children and young people affected by the imprisonment/offending of a parent or carer are supported.

## Youth Offending Team (YOT)

---

### YOT Achievements

- West Berkshire YOT works with some of the most vulnerable young people, often open to Children's Social Care, CAMHs and/or the Edge Young Substance Misusers Service. All young people known to the YOT are assessed in relation to their level of vulnerability, as well as their likelihood of reoffending and risk of committing serious harm to others;
- An audit has been undertaken addressing the vulnerability of young people known to the YOT which recognised the active and effective partnerships in place to protect young people;
- Taken responsibility for providing appropriate adults for 17 year olds as well as those under 17 being interviewed at the police station;
- Benchmarked practice against an HMIP inspection of services for children who sexually offend;
- Ensured all staff have up-dated safeguarding training, and training in relation to child sexual exploitation.

### YOT Challenges

- To proactively monitor that young people open to Children's Social Care, in police cells or in the secure estate, are safeguarded, particularly when placed out of area as Looked After Children or remanded or sentenced to custody;
- To implement action plan from the audit of services for young people who sexually offend;
- To ensure that YOT staff have confidence in working with young people to keep themselves safe, Protective Behaviours' training will be commissioned for the team;
- To develop a role for a member of the team to be the team CSE Champion and develop a role description.



## Voluntary Sector

---

### Voluntary Sector Achievements

- The Children & Young People's Voluntary and Community Sector (VCS) Forum continues to support the safeguarding needs of a diverse number of charities and community groups providing services to children and families across the West Berkshire area. Regular newsletters and our website (<http://wbcypforum.moonfruit.com/>) highlight local and national safeguarding information and training events;
- The Forum's Safe Network Ambassador has been available to support individual organisations manage safeguarding concerns particular to their agency and advise on appropriate safeguarding policies and procedures;
- The Forum has provided free to those working or volunteering in the VCS four Level 1/ Universal safeguarding training courses following the West Berkshire training programme and three Safe Recruitment Training courses following the Safe Network programme;
- The Forum led a West Berkshire multi-agency task group "to understand the relationship between parental emotional and mental health issues and children's school readiness and propose solutions to enhance available support" which was well received by the West Berkshire Children and Young People's Partnership;
- The Forum maintains a close relationship with Safe Network, attending regional events, to ensure that national VCS safeguarding information disseminated promotes current and best practice.

### Voluntary Sector Challenges

- The Forum has no authority over VCS organisations; it can only endeavour to encourage best safeguarding practices to those organisations registered with it;
- The introduction of the Disclosure and Barring Service (DBS) regulations has challenged VCS organisations to understand the implications for their respective services especially those concerning 'regulated activity' and 'supervision'; support and free training will continue to help VCS organisations become confident in meeting these regulations;
- Small VCS organisations with little infrastructure can struggle to meet Section 11 requirements of the 2013 Working Together to Safeguard Children. The Forum plans to provide training for Trustees/Committee members to help them better understand their safeguarding responsibilities.



## Sub Groups and Task Groups

LSCB Sub-Groups undertake significant work to meet the LSCB's responsibilities. Some of these are co-ordinated across Berkshire West or the whole of Berkshire.

### Child Death Overview Panel - Berkshire

The Child Death Overview Panel (CDOP) started in 2008 and meets quarterly to review all child deaths and share lessons learnt to prevent further deaths. The Panel consists of representatives from all six Local Safeguarding Children Boards in Berkshire, health, the police, coroners, social care and the voluntary sector. The Panel analyses all child deaths in Berkshire and makes recommendations to prevent deaths in the future.

In Berkshire as a whole, there was a 28.8% reduction in reviewed deaths, from 80 in 2011/12 to 57 in 2012/13. This reduction in 2012/13 was fully investigated and coincided with a reduction in the number of multiple births that year, which are known to carry an increased risk related to low birth weight. It is difficult to attribute causes for the reduction; however the Panel took consistent action to promote:

- neonatal reviews and risk factor monitoring;
- the 'one at a time' message for those undergoing IVF treatment;
- a consistent set of recommendations for 'safe sleeping', which all agencies adopted.

It is pleasing to note a similarly low number of deaths has been sustained in 2013/14 and a total of 59 child deaths have been recorded and 42 reviewed. Of these, five deaths occurred in West Berkshire, of which three related to 2012/13 and three to 2013/14; one will be reviewed in 2014/15 as part of the next quarterly neonatal review.

### Performance Group – Reading and West Berkshire

The Performance Sub-Group is a multi-agency group which reviews performance information from partner agencies. The Group provides challenge to an agreed set of performance indicators before reporting any concerns to each LSCB Executive for further action. Over the past year the Group has carried out an extensive review to define a new set of performance indicators. This was initially in relation to the Munro review and a new Ofsted performance framework and more recently in relation to the Quality Assurance framework developed by the south east regional LSCBs and adopted locally. The aim is to agree the dataset across the three Berkshire West LSCBs (Reading, West Berkshire and Wokingham) before extending across Thames Valley.

## **Policies and Procedures Group - Berkshire**

The Berkshire-wide Child Protection Policies and Procedures are published online. The Policy and Procedures Group ensures they are regularly updated.

During the year 2013-2014 the Group met on four occasions. They addressed recommendations identified by Tri.x, who provide the procedures, and the Working Together 2013 Impact Checklist to achieve compliance with Working Together 2013.

Changes over the past year have included a revised chapter on Safe Recruitment, Selection and Supervision of Staff, a new chapter on Allegations against Staff, Carers and Volunteers and a new chapter Safeguarding Foreign National Children who go Missing. The chapter Missing Child, Adult or Family is currently under review to reflect new statutory guidance. The sub-group also began development of a new chapter relating to child sexual exploitation using an example from Sheffield and incorporating learning from Thames Valley Police involvement in Operation Bullfinch.

The Group will continue to work closely with Tri.x over the coming year, including the development of a reporting mechanism for monitoring accessing of the procedures by practitioners.

## **Quality and Monitoring Group - West Berkshire**

The Quality and Monitoring Group meets every two months to agree an audit programme and review outcomes from partner agency audits. The audit programme covers key areas of safeguarding; audits carried out include case audits, sample studies and on-line surveys using SurveyMonkey. Partner agencies are also asked to contribute and bring to the Group audits they have completed in their own agency. Membership of the Quality Group has seen a drop in attendance by some partners over the past year. In addition, the chairs of the three Quality Groups in West Berkshire, Reading and Wokingham have met twice to develop a core programme of audits; this will not only provide consistency across the three areas but also build capacity by sharing audits across the area, which is particularly relevant for those agencies which sit on all three groups. Recent audits include children in need and categories of abuse at child protection conferences.

Maintaining membership by all partner agencies and ensuring there is capacity to carry out multi-agency audits are on-going challenges.

## Section 11 Panel - Berkshire

The Section 11 Panel meets regularly to oversee the Section 11 process for all Berkshire statutory and voluntary organisations and to support improvement.

The Panel now has an ongoing role in improving the self-assessment process for organisations. The Panel has a new remit to:

- Receive and evaluate the three year Section 11 self-assessment audits
- Monitor progress against the action plans at a mid-year (18 month) point
- Review and improve the process of submission and reporting, so it is more inclusive and enables discussion and learning
- Ensure the self-assessment template is adapted and improved according to policy and local developments.

Over the past year, the Panel's achievements included the following:

- Membership renewed for Thames Valley Police
- Lay member joined the Panel
- New terms of reference adopted
- New mid term review process agreed and implemented
- New relationships and membership developed for the NHS Local Area Team and the CCGs

## Child Sexual Exploitation (CSE) Group – West Berkshire

In response to a rise in national awareness of CSE, both a Strategic and Operational CSE Group are now well established in West Berkshire. The Strategic Group is working to a clear strategy and action plan and there are good links in place between the Strategic and Operational Groups. Good progress has been made in the identification and mapping of CSE locally and action has been taken by both the police and social care where there are concerns over young people. The Operational Group meets regularly to identify young people at risk of CSE and to develop plans to protect them. A CSE indicator tool is used, based on best practice and currently being agreed across Berkshire. A recent success through disruption was Operation Forte where police and social care worked together and identified young people at risk, and the potential offenders. Further work is being carried out to raise awareness of the issue of young boys and sexual exploitation. Work is underway with the Blast Project - the UK's leading male only exploitation project. The Group is undertaking this as part of the See Me, Hear Me framework produced by the Office of the Children's Commissioner's Inquiry November 2013. This area of work has also been identified as one of the LSCB Business Planning priorities for 2014-2017.

## Case Review Group - West Berkshire

The Case Review Group considers any serious incidents and makes recommendations to the LSCB Chair on whether the criteria for a Serious Case Review (SCR) are met. When a SCR is carried out, the Group agrees the review model to be used and manages the SCR process. One SCR has been conducted in West Berkshire over the past year – report published July 2014. The Case Review Group also meets regularly to review local and national SCRs. A Learning and Improvement Framework sets out how all agencies working with children should reflect on the quality of their services and learn from their own practice and that of others, creating a culture of continuous improvement.

Over the past year, the Case Review Group has considered a number of SCRs carried out in other areas, including several high profile reviews. A presentation on the Daniel Pelka SCR was commissioned by Reading, Wokingham and West Berkshire LSCBs to outline learning from the case, including issues around professional communication and practice issues for all agencies involved. A case study was also produced for use by training officers following a review carried out by the Youth Offending Team. The Group continues to identify learning and notifies agencies of relevant SCRs; for instance the West Sussex SCR was sent to all schools to ensure they were aware of lessons learnt and good practice.



## Training Group - Berkshire (West and East)

The Training Group is accountable to the six LSCBs across Berkshire and ensures access to appropriate multi-agency training. Universal safeguarding training remains the responsibility of each agency represented on the LSCB.

The LSCB Training Group produces a multi-agency programme designed to cover key safeguarding subjects. Over 50 LSCB multi-agency courses have been provided across Berkshire in 2013-2014, covering a wide variety of subjects including children with disabilities, safer care for children with parents with mental health, domestic abuse, disguised compliance, e-safety, child sexual exploitation and substance misuse. All of the courses have been in accordance with, and based on, the six LSCB Business Plans and agreed priorities. The overall evaluation of courses and attendance has been positive. The multi-agency representation has been maintained; however, the Group has raised concerns about some partner agencies' representation on courses.

To ensure training meets the desired objectives and is effective, the courses are quality assured, usually by a member of the Training Group. To measure the impact, competency questions are asked on the evaluation forms and, on a sample of courses a follow-up telephone call is made to find out what difference the training has made.

The introduction of the Learning and Improvement Framework, agreed across Berkshire and included in the Berkshire Child Protection Procedures, has improved dissemination of learning from reviews; this is now a standing item on each Strategic Training Group agenda, where key messages from reviews in each of the LSCBs can be shared.

Achievements to date:

- Observation guidance developed to monitor the quality assurance of training;
- Work undertaken with the Section 11 Panel to identify gaps in agency training or refresher training. The Section 11 Panel agreed an amendment to the Section 11 self-assessment tool to request that agencies provide evidence of their training strategies and comments on training compliance in relation to issues of diversity;
- E-learning packages continue to be reviewed but use of these lies with the relevant organisation;
- Kwango e-learning safeguarding training has been updated in line with Working Together 2013;
- Safeguarding Training Pathway has been produced, for adults and children's services staff;
- Joint meetings held with Berkshire East and Berkshire West Training Officers to produce the East and West LSCB Training Programmes;
- Managing Allegations identified as a need amongst practitioners and training courses arranged in the East and the West;
- Evaluation of training for LSCB courses and outcome audit completed;
- Review of LSCB Training Sub-Group work plan;
- Launch of CSE e-learning training was agreed by 5 of the 6 Berkshire LSCBs. This has been disseminated and used widely. The remaining LSCB has made suitable alternative arrangements.

#### Challenges:

- CSE Training Pathway – there has been a challenge in ensuring all relevant agencies are attending the meetings arranged in order to progress this;
- Concerns in relation to partnership participation on the Training Sub-Group have been raised annually and there is still a significant gap in the contribution of some LSCB partners to the group. Work has been carried out to try and improve this but to no avail. The Training Group continues to have no representation from Police, Housing or Probation. Historically and currently, information is received from Probation and Thames Valley Police and the Group has linked with the Section 11 Panel to obtain more information. The Group understands and acknowledges the resource pressures for services; however, absence of physical representation from these sectors has been a long standing issue. The Research in Practice Ensuring Effective Training briefing for LSCBs publication identifies the need for LSCBs to evidence within inspection that “*opportunities for learning are effective and properly engage all partners*”. This is currently not being achieved by the absence of significant LSCB partner agencies;
- There remains an issue with Thames Valley Police accessing multi-agency LSCB courses across Berkshire. This has been escalated to the Berkshire LSCB Chairs. Police attendance at multi-agency courses also varies nationally. It is worth noting that the Police do provide in-house training, including specialist areas, which they could benefit from opening up to other agencies to improve multi-agency practice;
- Receiving data in a co-ordinated way from the operational team to the Strategic Group in a timely manner has proved to be a difficulty for the Group at times;
- Monitoring of single-agency training is a requirement of the LSCB and additional resources will need to be identified to ensure this function is carried out sufficiently by the Training Sub-Group;
- Many of the tasks required of the Training Sub-Group are resource intensive, including the Training Needs Analysis and outcome evaluations. Adequate resources need to be identified;
- Some agencies are providing their own specialist single-agency safeguarding training e.g. Local Authorities for their social work teams, Probation and the Police, but these courses are not currently being offered to a multi-agency audience. There could be an opportunity for more co-ordination of these courses if the agencies bring them to the attention of the Training Sub-Group. Otherwise, there is a missed opportunity for all practitioners to learn in a multi-agency context;
- Keeping Safe – new DfE guidance for schools, does not mention the three year refresher period; as the Sub-Group has agreed this as a standard, members will have to work with schools to ensure this standard is met.

## Conclusions

The LSCB has been effective in challenging partner agencies over their roles and responsibilities as members of the LSCB. This has been demonstrated through development sessions held on leadership for all LSCB members and two sessions for executive members, one on challenge and one on Serious Case Review models.

Whilst LSCB attendance is good, better consistency in attendance is needed, particularly through the engagement of the NHS Local Area Team.

Agencies are under significant pressure, with rising numbers of vulnerable children needing services, and the LSCB has a key role ensuring partners continue to work together effectively.

Locally and nationally there has been a significant increase in the workload of Children's Services driven by changes in demography, increased expectations in relation to the quality of services, responses to specific issues (e.g. Child Sexual Exploitation) and a series of high profile child death tragedies. In the local context this has led to a significant increase in workload.

A positive development over the past year has been the inclusion of young people attending LSCB meetings. This provides an opportunity for members to hear first hand the views of young people, for the young people to talk about how services have worked for them, and for LSCB members to consider how to respond to the concerns they raise.

Lay members provide an objective view and bring insight to board meetings. Six- monthly network meetings are held across the Thames Valley area providing an opportunity for them to meet and discuss their role. As part of this, statutory partners attend to give talks on their agency. To date these have included Thames Valley Police, a representative from the Clinical Commissioning Group and a planned presentation from Probation. As their role has become embedded, lay members are now sitting on and chairing some LSCB sub-groups.

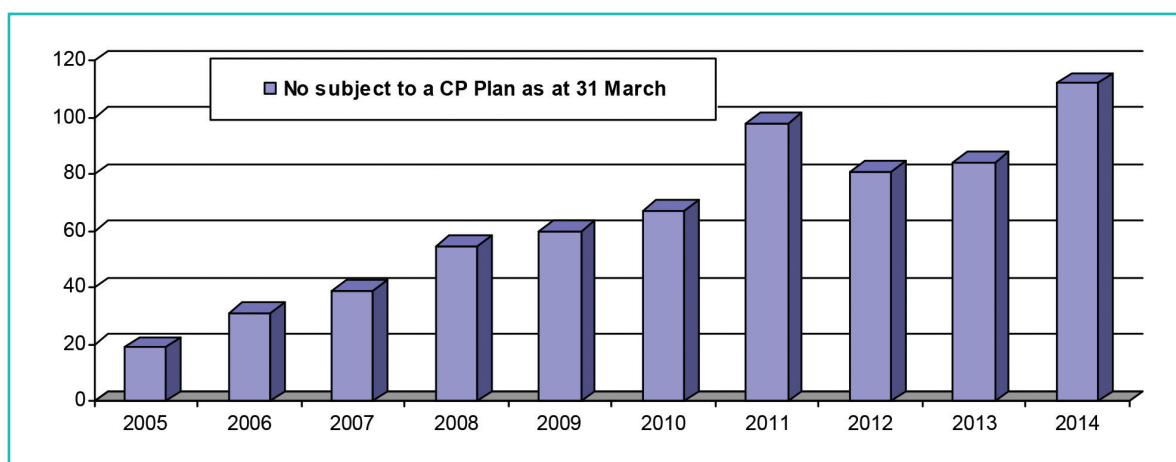
Looking ahead, the challenges that face the LSCB are:

- an increasing number of children with Child Protection Plans and rising numbers of Looked After Children make it crucial that LSCB partners and their agencies work together effectively to address the needs of these vulnerable groups;
- to ensure the views of children and young people are taken into account when planning services;
- to ensure the continued involvement of young people at LSCB meetings;
- to ensure Children's Social Care do not allow drift in cases of children either on Plans or looked after by the local authority.

## Appendix A - Child Protection Data

### Total of Children and Young People subject to a Child Protection Plan by Year

| Year                                   | 2005 | 2006 | 2007 | 2008 | 2009 | 2010 | 2011 | 2012 | 2013 | 2014 |
|----------------------------------------|------|------|------|------|------|------|------|------|------|------|
| No subject to a CP Plan as at 31 March | 19   | 31   | 39   | 55   | 60   | 67   | 98   | 81   | 84   | 112  |

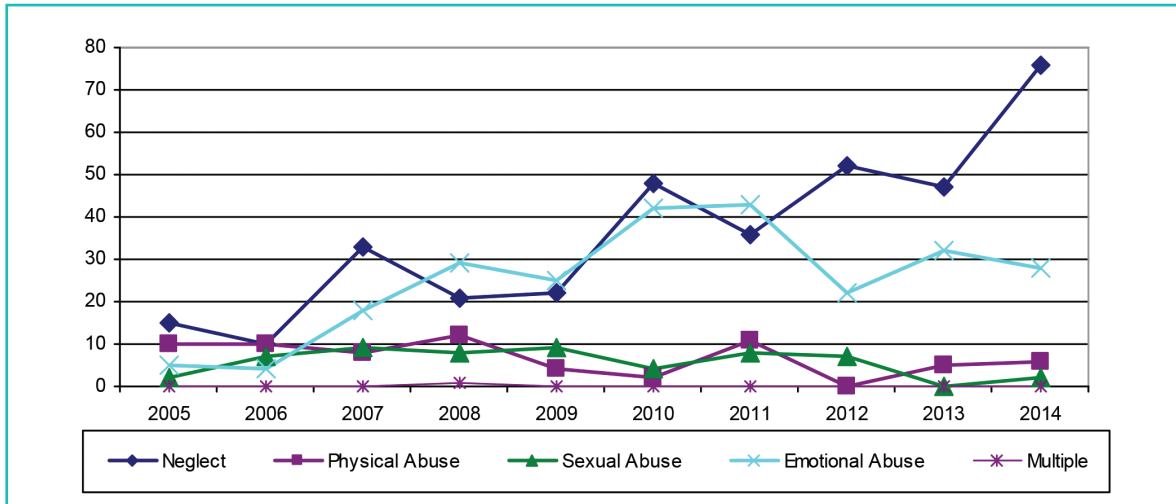


The total of young people subject to Child Protection Plans in West Berkshire as at 31 March 2014 was 112. This is a rate of 23 per 10,000 population aged under 18 which is below the national average of 38 per 10,000 and below our comparator group of 30.3 per 10,000 (March 2013). The number of young people for 2013/14 represents a 33% increase over the previous year.

### Reasons for CP Plan Trends

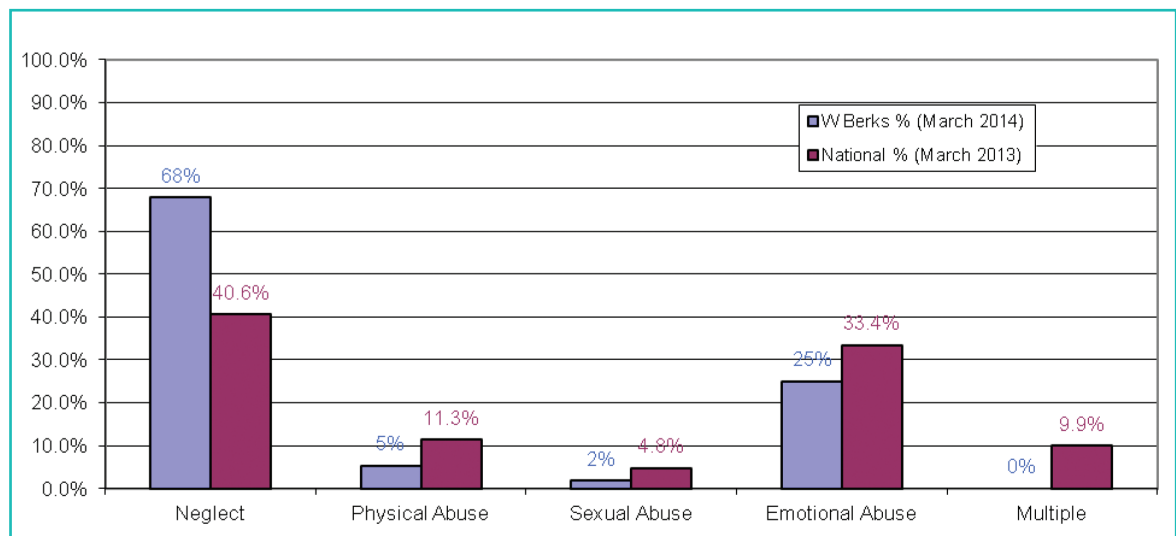
| Year (as at 31 March)     | 2005 | 2006 | 2007 | 2008 | 2009 | 2010 | 2011 | 2012 | 2013 | 2014 |
|---------------------------|------|------|------|------|------|------|------|------|------|------|
| Neglect                   | 15   | 10   | 33   | 21   | 22   | 48   | 36   | 52   | 47   | 76   |
| Physical Abuse            | 10   | 10   | 8    | 12   | 4    | 2    | 11   | 0    | 5    | 6    |
| Sexual Abuse              | 2    | 7    | 9    | 8    | 9    | 4    | 8    | 7    | 0    | 2    |
| Emotional Abuse           | 5    | 4    | 18   | 29   | 25   | 42   | 43   | 22   | 32   | 28   |
| Multiple                  | 0    | 0    | 0    | 1    | 0    | 0    | 0    | 0    | 0    | 0    |
| Total Reasons for CP Plan | 32   | 31   | 68   | 71   | 60   | 96   | 98   | 81   | 84   | 112  |





As at 31 March 2014 Neglect continued to be the most frequent reason for Child Protection Plans, showing a steep upwards trend especially from 2011 onwards. Emotional Abuse on the other hand, which had shown an increase in numbers in 2012/13, is showing a small decrease in the 2013/14 year. In 2012/13 there was a slight increase in the number of CP Plans made for the category of Physical Abuse while in 2013/14 there has been little change. There were two sexual abuse CP cases recorded as at 31 March 2014.

### National and Local Reasons for CP Plan Percentage Trends



The above graph compares West Berkshire's reasons (31 March 2014) for CP Plans with national (2012/13) percentages. In the case of "Neglect" West Berkshire is greater than the national average (68% and 40.6% respectively) In the instance of "Emotional Abuse", West Berkshire is lower than national figures, with West Berkshire being 25% and the national average 33.4%. Sexual Abuse for West Berkshire at 2% is opposed to the national figure of 4.8%. Physical Abuse is lower than the national average (5% for West Berkshire as opposed to 11.3% for the national figure)

## Children subject to Protection Plans Profile as at 31 March 2014

As at 31st March 2014, there were 112 children subject to Child Protection Plans. There were 48 boys (43%), 60 girls (54%) and 4 unborn children (4%). Nationally (March 2013), 51.4% of those subject to a CP Plan are male, and 48.6% female.

Under 1's accounted for 15%; 1-4's for 29%; 5-9's for 24%; 10-15's for 29% and 16+ for 4%. (unborn 4%).

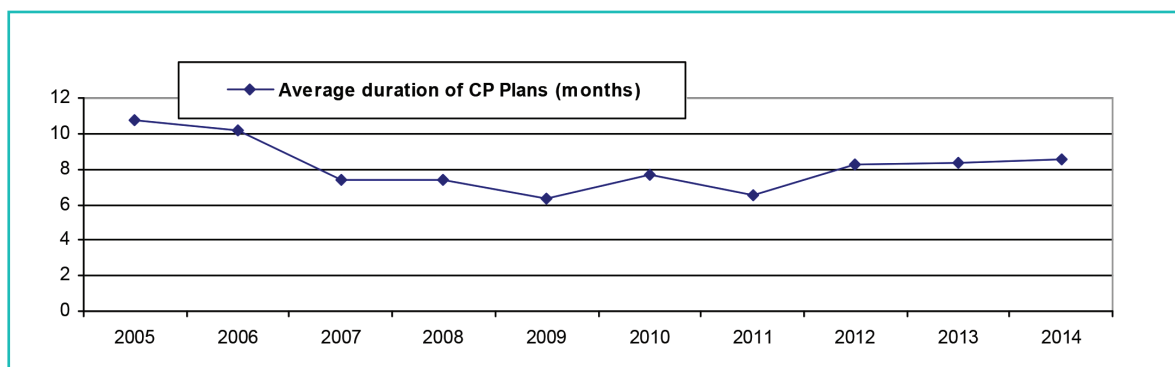
13% of children who were subject of Child Protection Plans at 31 March 2014 were from an ethnic minority. This compares with 11.7% of young people in West Berkshire's schools from ethnic minorities.

## Children subject to a second or subsequent Child Protection Plan

In 2013/14, West Berkshire made 5 (3.5%) children subject to a 2nd or subsequent CP Plan within 2 years of a previous CP Plan. The national average for the period 2012/13 was 14.9%.

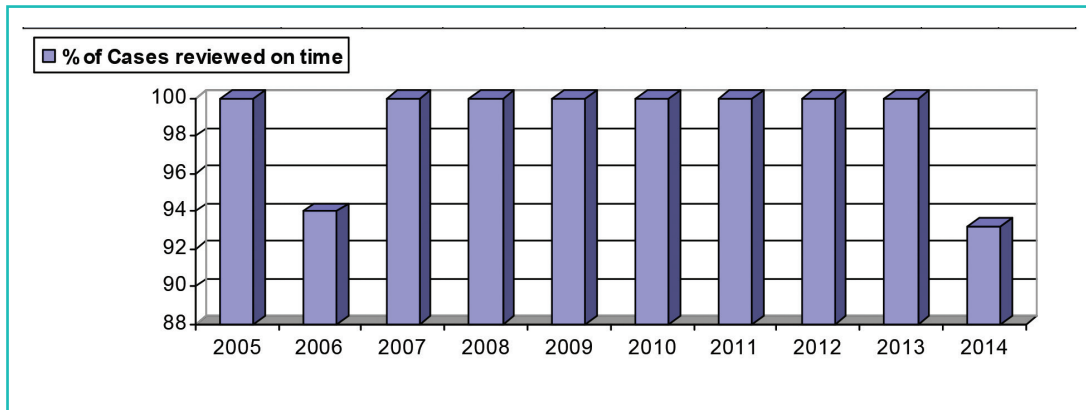
## Duration of CP Plans by Time for Children subject to a CP Plan

|                                       | 2005 | 2006 | 2007 | 2008 | 2009 | 2010 | 2011 | 2012 | 2013 | 2014 |
|---------------------------------------|------|------|------|------|------|------|------|------|------|------|
| Less than 3 months                    | 8    | 1    | 17   | 16   | 35   | 25   | 33   | 31   | 24   | 25   |
| 3 months - 6 months                   | 6    | 5    | 7    | 11   | 14   | 12   | 12   | 25   | 19   | 21   |
| 6 months - 12 months                  | 8    | 8    | 27   | 14   | 19   | 38   | 56   | 39   | 55   | 35   |
| 12 months - 24 months                 | 29   | 4    | 5    | 13   | 15   | 18   | 12   | 26   | 25   | 32   |
| > 2 years                             | 0    | 1    | 4    | 0    | 0    | 0    | 1    | 2    | 3    | 2    |
| Total CP Plans Endings                | 51   | 19   | 60   | 54   | 83   | 93   | 114  | 123  | 126  | 115  |
| Average duration of CP Plans (months) | 10.8 | 10.2 | 7.4  | 7.4  | 6.3  | 7.7  | 6.5  | 8.3  | 8.4  | 8.5  |



## Percentage of Child Protection Cases Reviewed in Timescale

| Year                        | 2005 | 2006 | 2007 | 2008 | 2009 | 2010 | 2011 | 2012 | 2013 | 2014 |
|-----------------------------|------|------|------|------|------|------|------|------|------|------|
| % of Cases reviewed on time | 100  | 94   | 100  | 100  | 100  | 100  | 100  | 100  | 100  | 92.3 |



In 2014, 92.3 per cent of Child Protection cases were reviewed on time.

## Appendix B - Training

Safeguarding training is essential to ensure staff and volunteers are kept up to date with legislation and information.

All agencies have a responsibility to provide their staff and volunteers with suitable training which is appropriate to their role.

The West Berkshire training team provides training at Universal level for Social Care, Early Years team, schools and the voluntary sector. This first introduction to safeguarding explains what signs and symptoms to look for and who to report to.

All training is evaluated; attendees are asked to score their knowledge before and after the event, to measure the change and impact as part of the evaluation process.

### Local Authority safeguarding training which took place in West Berkshire 2012-2013

| <b>Safeguarding Training delivered in West Berkshire</b> |                          |                            |
|----------------------------------------------------------|--------------------------|----------------------------|
|                                                          | <b>Number of courses</b> | <b>Number of delegates</b> |
| <b>Universal</b>                                         |                          |                            |
| Universal, in house (school site)                        | 52                       | 700                        |
| Universal, delivered at council venues                   | 11                       | 142                        |
| Total                                                    | 63                       | 842                        |
| <b>Designated Person training</b>                        |                          |                            |
| Designated person introduction & refresher               | 4                        | 160                        |
| <b>Targeted Safeguarding</b>                             |                          |                            |
| LSCB Multi-agency programme - various                    | 7                        | 88                         |

West Berkshire also provides e-learning opportunities. There are currently three e-learning packages available to all staff and volunteers throughout the area.

E-learning usage information for 2013-2014 is as follows:

|                                         |                                   |
|-----------------------------------------|-----------------------------------|
| <b>Domestic abuse course</b>            | 491                               |
| <b>Safeguarding children course</b>     | 148 (version 2 launched May 2014) |
| <b>Child Sexual Exploitation course</b> | 166 (launched January 2014)       |

The e-learning training provides information on practice and legislation. A quiz is completed at the end of each course; successful completion produces a certificate which can be used as evidence of Continuing Professional Development.

## Appendix C - Membership at May 2014

| Name            | Role                                                                                        |
|-----------------|---------------------------------------------------------------------------------------------|
| Stephen Barber  | Independent Chair                                                                           |
| Robin Askew     | Vice Principal (Care), Mary Hare School                                                     |
| Judith Colby    | Lay Member                                                                                  |
| Debbie Daly     | Nurse Director, Berkshire West Clinical Commissioning Group Federation                      |
| Mark Evans      | Head of Children's Services, West Berkshire Council                                         |
| Leila Ferguson  | Lay Member                                                                                  |
| Kevin Gibbs     | Head of Service, Children and Family Court Advisory and Support Service                     |
| June Graves     | Head of Care Commissioning, Housing & Safeguarding, West Berkshire Council                  |
| Liz Housden     | Headteacher St Finian's Catholic Primary School                                             |
| Ros Haynes      | LSCB Business Manager, West Berkshire Council                                               |
| Jon Hewitt      | Headteacher, The Castle School                                                              |
| Sarah Holland   | Senior Probation Officer – Partnerships, Thames Valley Probation Trust                      |
| Julie Kerry     | Associate Director for Patient Experience, Thames Valley Area Team, NHS South of England    |
| Rosemary Lilley | Voluntary Sector representative                                                             |
| Alexandra Luke  | Head of Mental Health Service West Berkshire, Berkshire Healthcare NHS Foundation Trust     |
| Ian Mundy       | Locality Director (West Berkshire), Berkshire Healthcare NHS Foundation Trust               |
| Irene Neill     | Portfolio Holder Children and Young People, West Berkshire Council                          |
| Davy Pearson    | Manager, Youth Offending Team                                                               |
| Ian Pearson     | Head of Education Service, West Berkshire Council                                           |
| Karen Pottinger | Principal Education Welfare Officer, West Berkshire Council                                 |
| Susan Powell    | Safer Communities Partnership Team Manager, West Berkshire Council                          |
| Robin Rickard   | Superintendent, Thames Valley Police                                                        |
| Janet Scott     | Service Manager, West Berkshire Council                                                     |
| Lorna Sherlock  | Tutorial Team Leader, Newbury College                                                       |
| Maureen Sims    | Deputy Headteacher, St Bartholomew's Secondary School                                       |
| Rachael Wardell | Corporate Director, Communities (statutory DCS), West Berkshire Council                     |
| Louise Watson   | Consultant Paediatrician, Designated Doctor                                                 |
| Ian Wootton     | Commissioning Manager (Substance Misuse), Public Health & Wellbeing, West Berkshire Council |

## Appendix D - Financial information

The budget is monitored by the Business Manager and reports are provided for each LSCB meeting. The majority of the budget is spent on staffing to support the work of the Board.

The LSCB budget 2013-2014 is made up of contributions from the Local Authority, the CCG, Police, Probation, CAFCASS and Berkshire Healthcare NHS Foundation Trust.

Supplies and services include expenditure for the cost of an Independent Chair, updates to the Child Protection Procedures and the costs associated with administering the LSCB training programme and the annual conference. This also covers any printing costs for publicity materials and leaflets.

In addition a small amount is spent under premises to cover the hire of meeting rooms, refreshments and venues for LSCB activities and meetings.

### Income and Expenditure 2013 – 2014

| Income                                                                                                                | £                 |
|-----------------------------------------------------------------------------------------------------------------------|-------------------|
| Local Authority                                                                                                       | 89,830.00         |
| CCG                                                                                                                   | 20,000.00         |
| Police                                                                                                                | 2,000.00          |
| Probation                                                                                                             | 895.00            |
| CAFCASS                                                                                                               | 550.00            |
| Berkshire Healthcare Foundation Trust                                                                                 | 1,000.00          |
| Additional income collected to cover the costs of the SCR from those agencies whose staff attended the learning event | 2,500.00          |
| <b>TOTAL INCOME</b>                                                                                                   | <b>116,775.00</b> |

| Expenditure              | £                 |
|--------------------------|-------------------|
| Employees                | 89,729.80         |
| Supplies and Services *  | 22,581.60         |
| Premises                 | 674.00            |
| <b>TOTAL EXPENDITURE</b> | <b>112,985.40</b> |

\*Additional costs due to SCR

## Appendix E - List of acronyms

|                |                                                        |
|----------------|--------------------------------------------------------|
| <b>BHFT</b>    | Berkshire Healthcare NHS Foundation Trust              |
| <b>CAFCASS</b> | Children and Family Court Advisory and Support Service |
| <b>CAMHS</b>   | Child and Adolescent Mental Health Services            |
| <b>CCG</b>     | Clinical Commissioning Group                           |
| <b>CDOP</b>    | Child Death Overview Panel                             |
| <b>CSE</b>     | Child sexual exploitation                              |
| <b>DBS</b>     | Disclosure and Barring Service                         |
| <b>DfE</b>     | Department for Education                               |
| <b>FGC</b>     | Family Group Conference                                |
| <b>ISVA</b>    | Independent Sexual Violence Advisors                   |
| <b>LAC</b>     | Looked After Child                                     |
| <b>LSCB</b>    | Local Safeguarding Children Board                      |
| <b>MAPPA</b>   | Multi-Agency Public Protection Arrangements            |
| <b>MARAC</b>   | Multi-Agency Risk Assessment Conference                |
| <b>SARC</b>    | Sexual Assault Referral Centre                         |
| <b>SCP</b>     | Safer Communities Partnership                          |
| <b>SCR</b>     | Serious Case Review                                    |
| <b>SHIP</b>    | Sexual Harm Intervention Project                       |
| <b>TVP</b>     | Thames Valley Police                                   |
| <b>VCS</b>     | Voluntary and Community Sector                         |
| <b>YOT</b>     | Youth Offending Team                                   |